

German words never end with "scharf s". They end with "schluss s" or "es-zet".

This is a German "z"

Das kleine Alphabet.

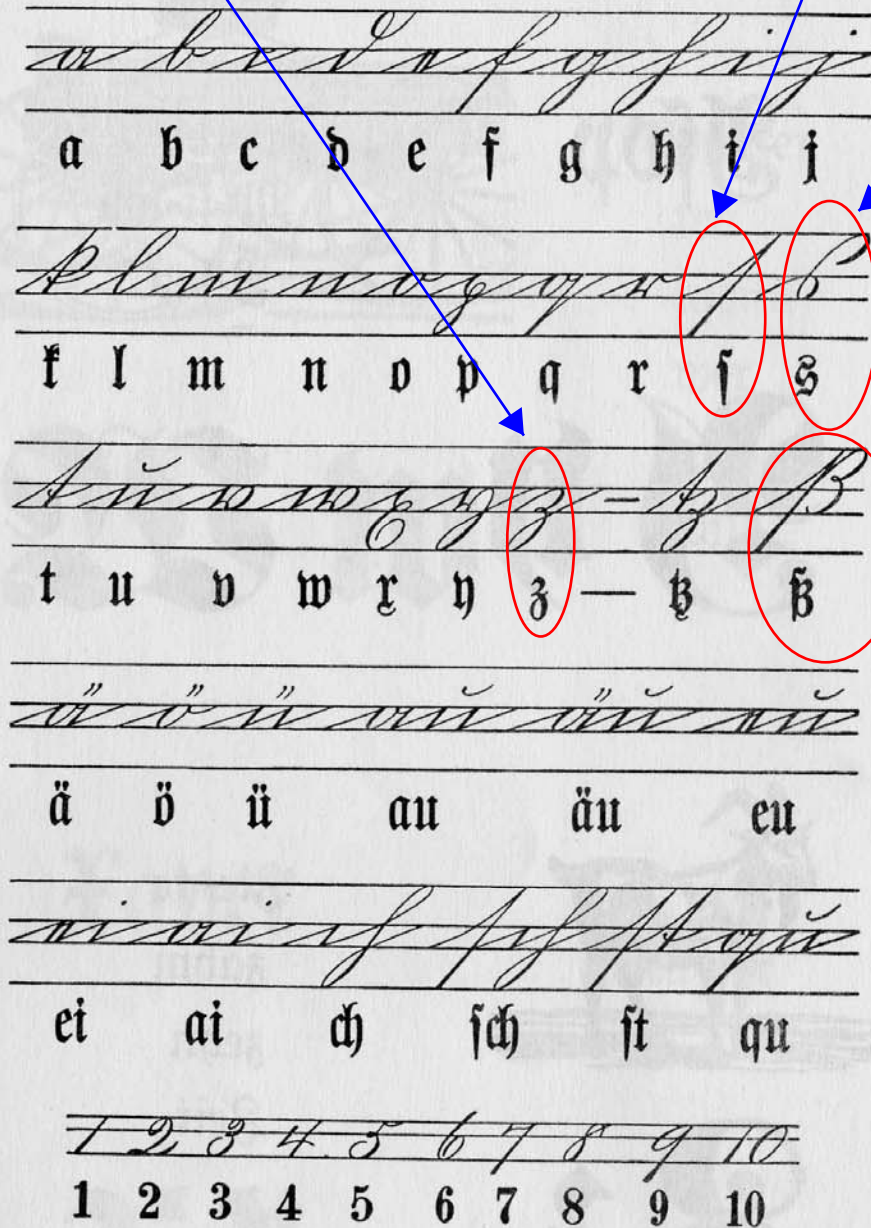
This is a German "scharf s"

This is a German "schluss s"

s and z pushed together "es-zet".

This letter of the German alphabet, "es-zet", does not exist in the US.

The US replaces the "es-zet" with an "s"... or ... "ss" ... or ... "sz".



Das große Alphabet.

